



SUNPARK  
RESIDENCE

---

LUXURY LIVING IN SYOKIMAU

---

## THE LOCATION

- Conveniently located on Chady Road, off Mombasa Road just behind Gateway Mall.
- Set on a vast 6.2 acres.
- In close proximity to the new Nairobi Railway Terminus.
- A short drive from Jomo Kenyatta International Airport.
- Easy connectivity to the Nairobi Mombasa Road expressway, less than 1 KM away.

## THE COMMUNITY

- Spacious 3 bedroom apartments with 3 bathrooms, size 1550 sq ft / 145 sqm.
- Spacious 2 bedroom apartments with 2 bathrooms, size 1150 sq ft / 110 sqm.
- Each block has an elevator.
- Borehole water in all blocks.
- CCTV monitoring & Perimeter wall with electric fencing.
- 24-hour manned entry and exit with controlled parking.
- One car parking per home & Separate visitors parking.
- Shops and convenience stores.

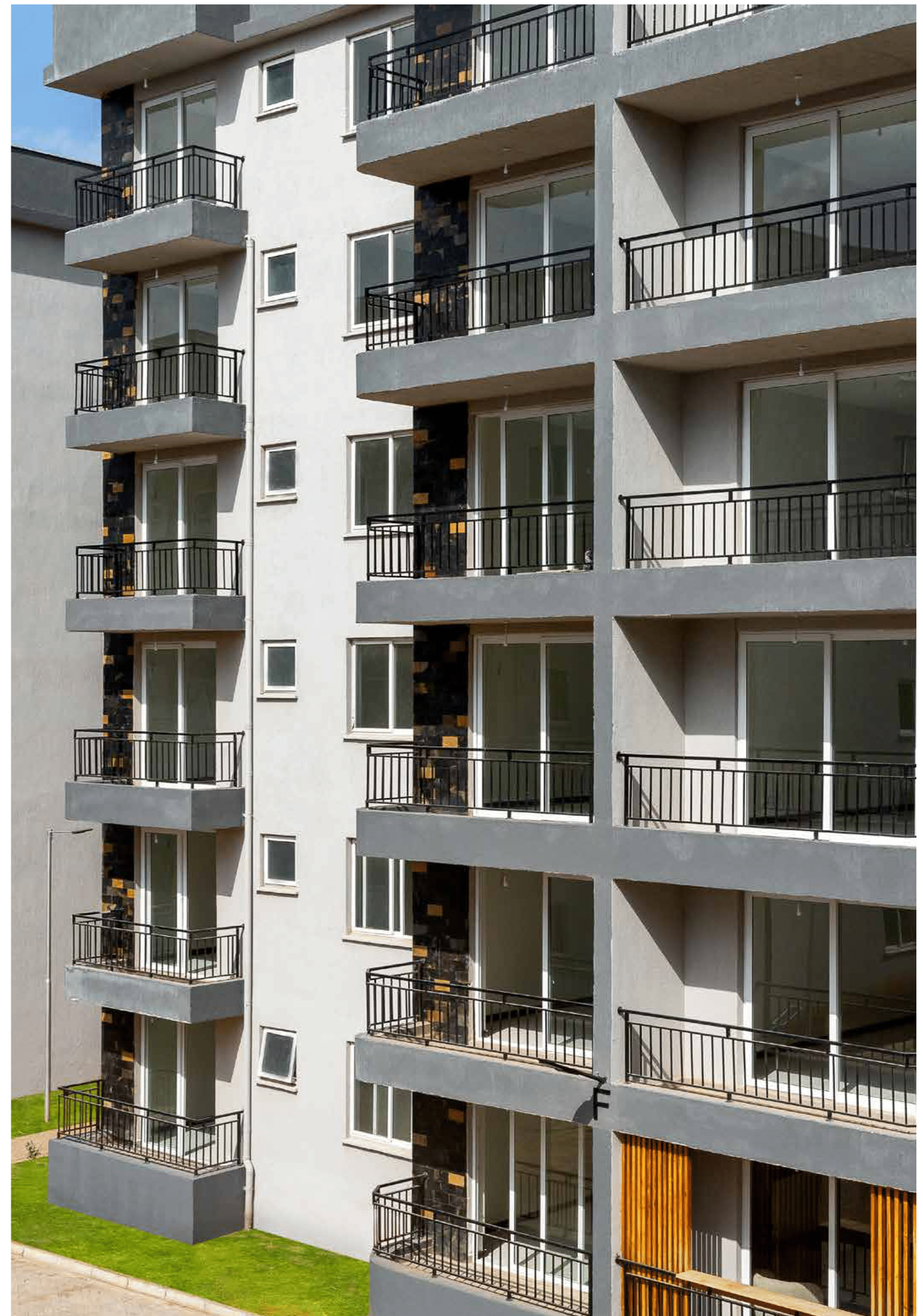


**Sunpark  
Residence**



## AMAZING AMENITIES

- Kids park with playground, benches & sandpit.
- Community hall, gym, swimming pool, jacuzzi, steam rooms, football pitch & tennis court.
- Lush landscaping and manicured gardens in between blocks.





## THE APARTMENTS

- Contemporary design buildings with stylish design.
- High floor to ceiling heights.
- Superior quality porcelain tiles throughout the apartment.
- Modern, open-plan fitted kitchen and wardrobes.
- Visitors cloakroom.
- Well lit bedrooms with separate bathrooms.
- Exclusively designed interiors with a touch of sophistication.
- Heavy duty, sliding UPVC windows.
- Internet and TV access points.

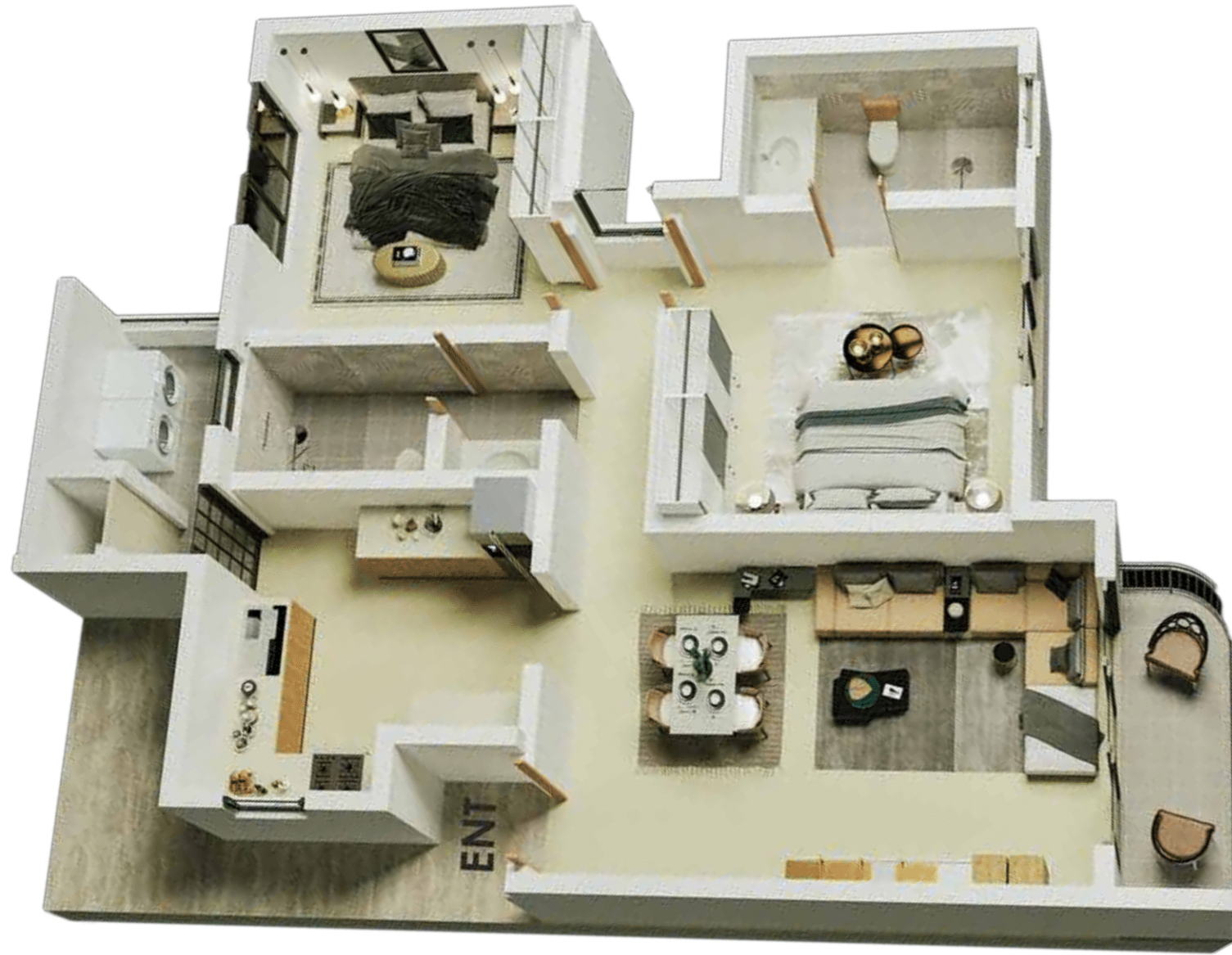
Flexible payment plans for both  
financed and cash buyers.



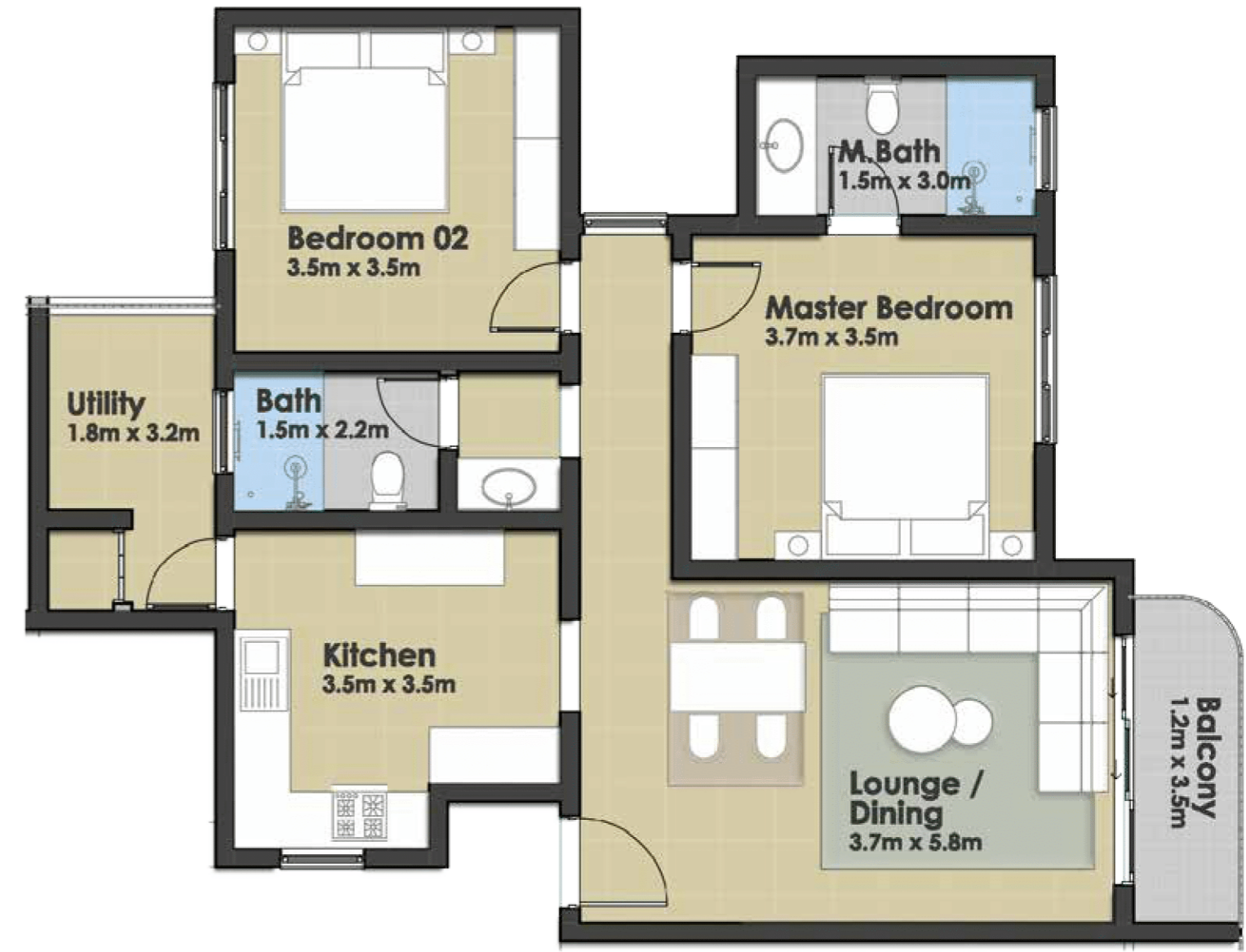


Sunpark  
Phase 2

Lifestyle Terraces



2 Bedroom



2 Bedroom - 1150 sq ft / 110 sqm



3 Bedroom



3 Bedroom - 1550 sq ft / 145 sqm



**PHASE I**

		<b>One Bedroom (782 Sqft)</b>	<b>Two Bedroom (1,150 Sqft)</b>	<b>Three Bedroom (1,550 Sqft)</b>
<b>Payment Plan</b>		<b>6,500,000</b>	<b>8,000,000</b>	<b>10,000,000</b>
Deposit	20%	1,300,000	1,600,000	2,000,000
Handover July 2024	80%	5,200,000	6,400,000	8,000,000

